

## Power Distribution Block

Ordering #: ERA-3-0-4444T

**Four-Pole Design:** Provides versatile power distribution for internal and field wiring

**Wide Terminal Selection:** Compatible with a variety of terminals and connectors

**Rugged Construction:** Built-in bottom ribs add strength and durability

**Durable Base Material:** Molded high-temperature phenolic base for superior heat and electrical resistance

**High Electrical Ratings:** UL and CSA certified for up to 600 volts and 50-75 amps

**Wire Range Compatibility:** Accepts entrance wire sizes from #2 to #14 AWG

IN  
STOCK



### ERA-3-4444 Specs

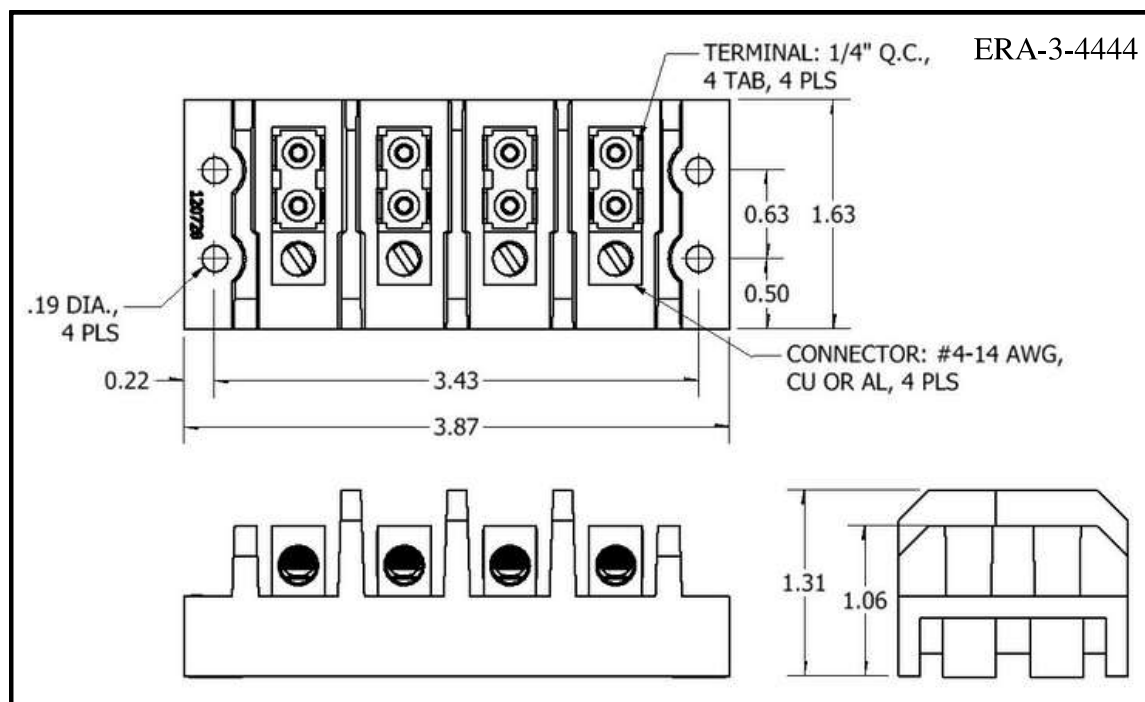
Voltage: 600V

Current: 50A

UL Temperature Rating: 150°C

Wire Range: #4-14 AWG

Wire Type: Cu or Al



*All dimensions are in inches*