

General Purpose Terminal Block

Ordering #: ESB1C-6-6-0

Compact and Cost-Effective: Ideal for dependable internal wiring connections

Highly Configurable: Choose from several hundred combinations of quick-connect and screw terminals

Easy Installation: Single fastener mounting with anti-rotation pin for secure placement

Universal Fit: Standard spacing and mounting accommodate a wide range of applications

Quick Availability: Stocked components allow near off-the-shelf delivery

No Tooling Charges: Save significantly over custom terminal boards

UL Component Recognized: All terminal layouts meet U.L. standards

Flexible Tab Sizes: Standard .250 x .032 tabs; most styles also offered in .187 x .020

Optional Features: Terminal identification and color code printing available

Durable Construction: UL-listed phenolic base rated for 150°C high-temp environments

Enhanced Safety: Electrical spacing exceeds 3/8"; elevated base offers improved moisture protection



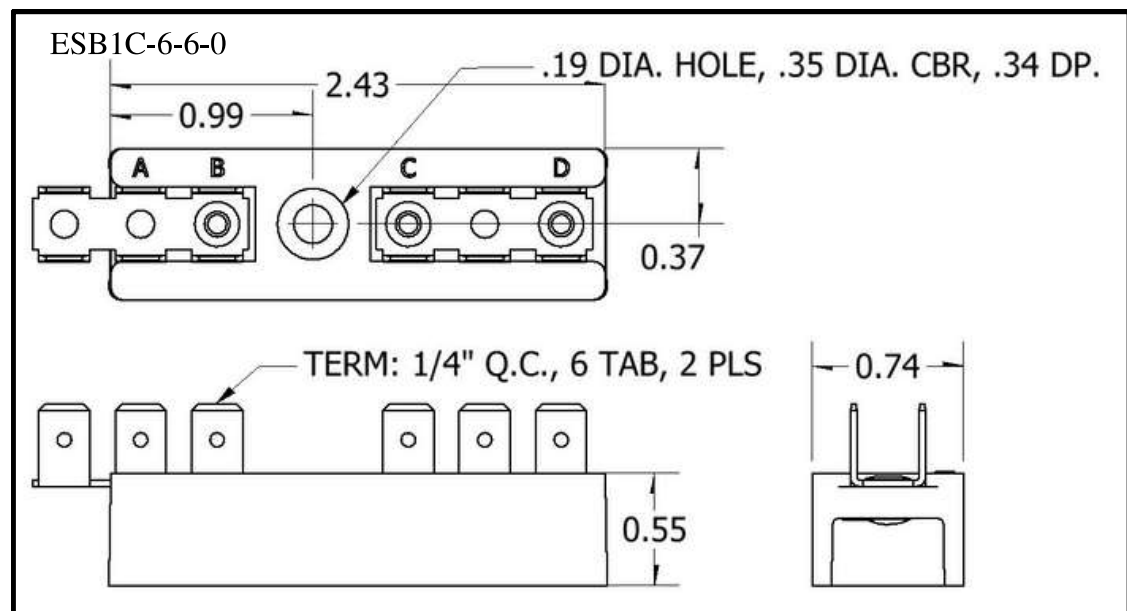
ESB1C-6-6-0 Specs

Voltage: 300V

Current: 20A

Temperature Rating: 150°C

Tightening Torque: 5in.-lbs.



All dimensions are in inches