

Power Distribution Block

Ordering #: ERB-5-06-T

Three-Pole Design: ERB Series delivers expanded connectivity in a compact form

Broad Compatibility: Offers the same wide selection of terminals and connectors as the EB Series

Ideal for Field Wiring: Provides a reliable junction between field wiring and internal circuits

Multiple Wire Ranges: Supports entrance wire sizes of 6–8, 4–14, 2–14, and 0–14 AWG

Configurable Options: Available in both 2- and 3-pole models to suit application needs

UL Flame Rating: UL 94 V-1 rated for flame retardancy

Quick-Connect Efficiency: Enables fast, economical branch circuit connections

IN
STOCK



ERB-5-06-T Specs

Voltage: 300V

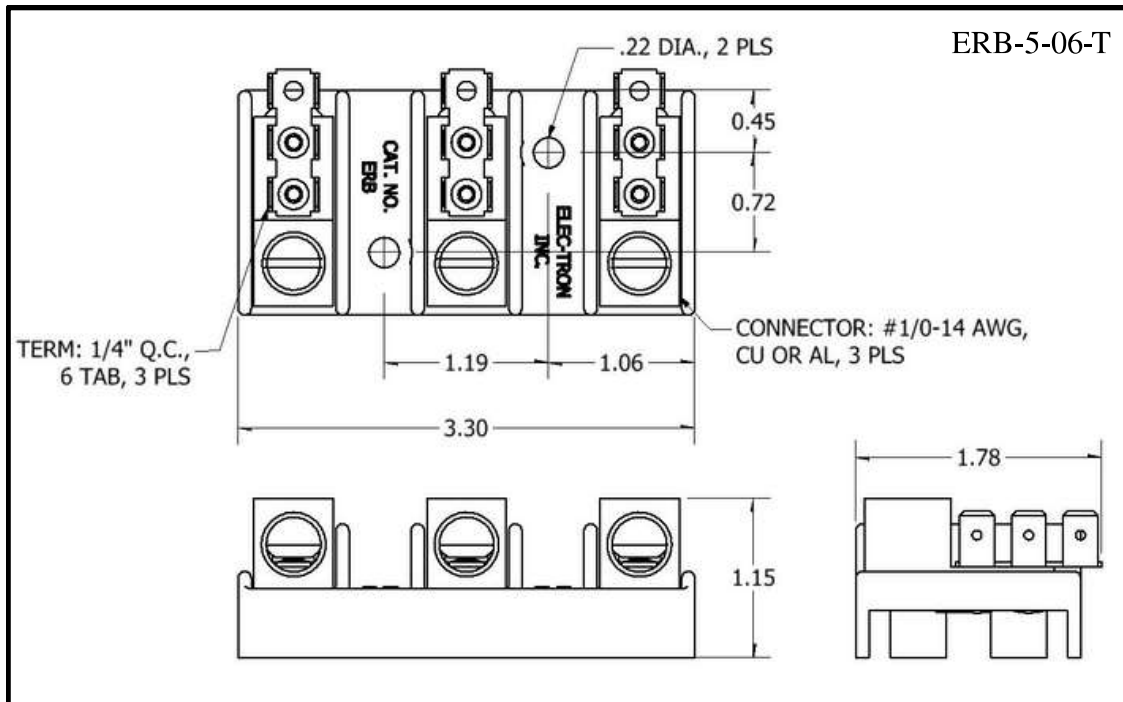
Current: 120A

Temp Rating: 150°C

Wire Range: #1/0-14 AWG

Wire Type: Cu or Al

Tightening Torque: 35-50 in.-lbs.



All dimensions are in inches