



Quick Connect Terminals

- **One-Piece Construction:** Quick-connect tabs are made from a single piece for durability and reliability
- **Size Options:** Available in both .250" and .188" tab sizes
- **Multiple Configurations:** Offered in single, double, and triple quick-connect versions

Screw Terminals

- **Screw Terminal Options:** Available with or without wire retaining ears
- **Flexible Combinations:** Quick-connect tabs and screw terminals can be combined to meet 80% of appliance design needs
- **Cost-Effective Solutions:** Designed for substantial savings without compromising performance
- **U.L. Component Recognized:** Over 1,000 terminal arrangements are pre-approved and ready for use

Bifurcated Soldering Terminals

- **Supports Soldered Connections:** Ideal for circuits using solid-state components like resistors and diodes
- **Dual-Purpose Terminals:** Combine solder lugs and quick-connect tabs in a single-piece design
- **Efficient Bifurcated Lugs:** Forked terminals hold 1–3 wires securely without threading or wrapping
- **Standard on All Products:** Available across all Elec-Tron boards and blocks
- **UL Compliant:** Meets or exceeds mechanical security requirements



Grounding & Mechanical Lugs

- **Supports Varying Voltages:** Suitable for a range of electrical applications
- **Three Standard Sizes:** Streamlined options to fit common designs
- **Multiple Mounting Styles:** Available in three widely used configurations
- **Custom Configurations:** Tailored solutions available upon request
- **Secure Connections:** Set screw included for added stability

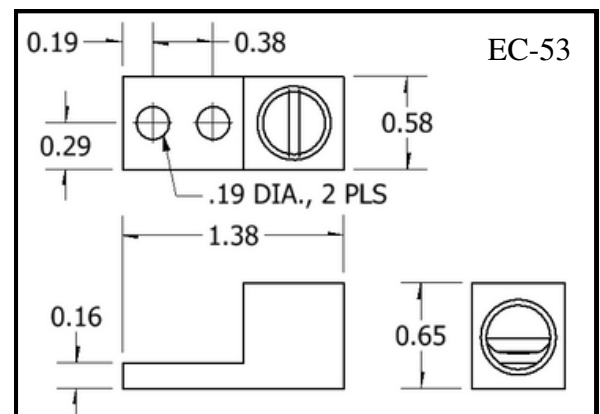
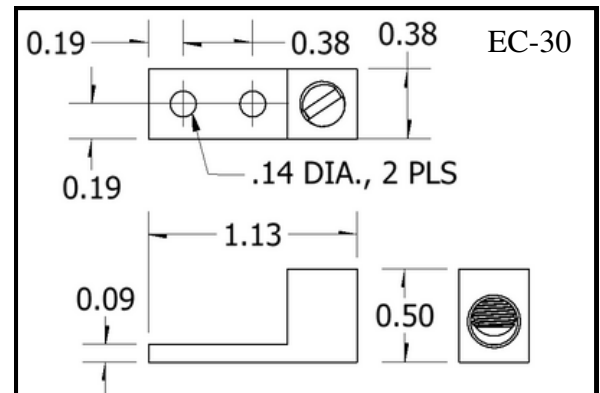
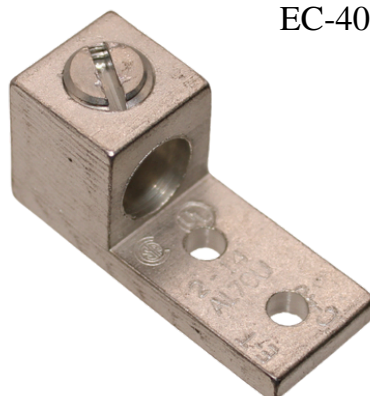


UL E109333

Category No.	Temperature Rating (°C)	Wire Range-Cu (AWG)	Wire Range-Al (AWG)	Tightening Torque (in.-lbs.)
EC-3_	75	4 - 6	4 - 6	35
		8	8	25
		10 - 14	10 - 12	20
EC-4_	90	2 - 3	2 - 3	50
		4 - 6	4 - 6	45
		8	8	40
		10 - 14	10 - 12	35
EC-5_	75	1/0 - 3	1/0 - 3	50
		4 - 6	4 - 6	45
		8	8	40
		10 - 14	10 - 12	35

CSA 70063223

Category No.	Temperature Rating (°C)	Wire Range-Cu (AWG)	Wire Range-Al (AWG)
EC-3	75	4-14	4-12
EC-4	90	2-14	2-12
EC-5	75	1/0-14	1/0-12



Grounding and Mechanical Lug

Ordering #: EC-40B

- **Reliable Ground Path:** Provides a secure, low-resistance connection to ground for fault current dissipation
- **Corrosion-Resistant Materials:** Made from durable copper or tin-plated alloys for long-term outdoor performance
- **Utility-Grade Performance:** Ideal for grounding transformers, switchgear, and pole-mounted or pad-mounted equipment
- **Versatile Mounting:** Can be installed on enclosures, conduit, and structural frames
- **UL E109333 Certified:** Meets UL grounding and bonding equipment standards for safety and performance
- **CSA 70063223 Compliant:** Approved for use in Canadian utility and electrical systems
- **Wide Conductor Compatibility:** Accepts a broad range of wire sizes and solid or stranded conductors
- **Secure Bonding:** Ensures proper bonding of metal components to reduce shock risk and equipment interference

IN
STOCK



EC-40B Specs

Temp Rating: 90°C

Wire Range (Cu): #2-14 AWG

Wire Range (Al): #2-12 AWG

