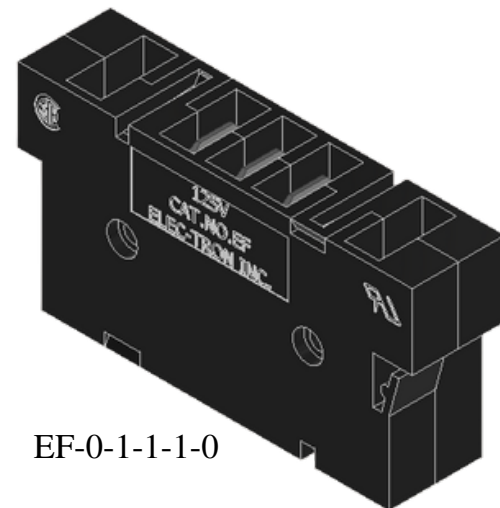


Snap-in Insulated Terminal Blocks

- **Compact Snap-In Design:** Insulated terminal block available in 2- to 5-pole configurations
- **Through-Cabinet Wiring:** Engineered for reliable connections through cabinet walls
- **Secure Mounting:** Snaps firmly into cabinets up to 0.042" thick without tools



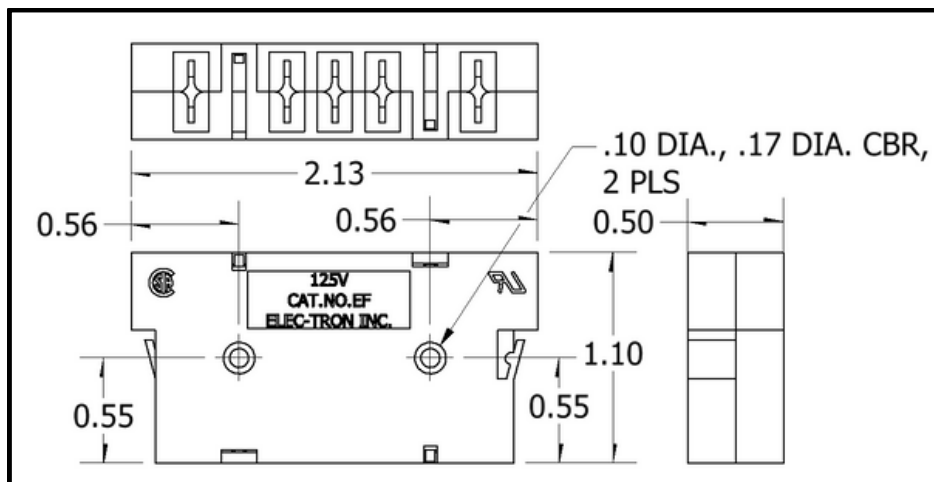
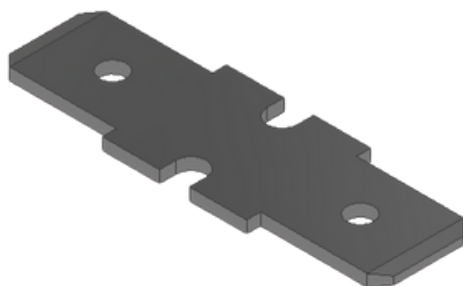
EF-0-1-1-1-0

UL E61937

- Voltage: 250V
- Current: 20A
- Wire Range: #14-22 AWG Copper

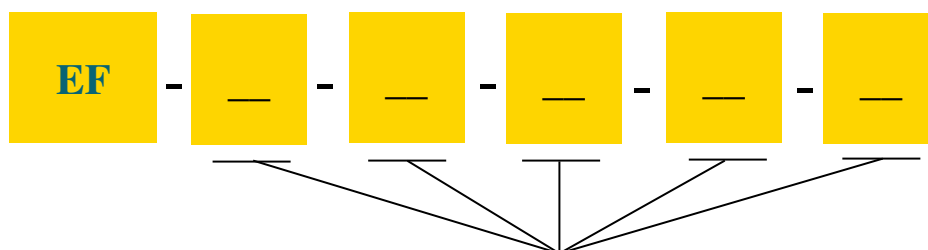
EF Block

2 Tab Quick Connect



All dimensions are in inches

Part Ordering Information EF Block



Terminal 1-5:

0 = empty terminal
1 = terminal with 2 tab quick connect

Snap-in Insulated Terminal Block

Ordering #: EF-1-1-1-1-1

Compact Snap-In Design: 2- to 5-pole insulated terminal block for through-cabinet wiring

Ideal Applications: Perfect for blower motor speed controls and similar through-cabinet connections

Amp & Voltage Ratings: Rated for 20 amps, at 125 volts

Durable Base Material: Molded from UL 94V-0 rated polypropylene for heat resistance

Secure Mounting: Snaps into cabinets up to 0.042" thick for easy installation

Polarity Assurance: Maintains polarity using different-sized quick-connect tabs

IN
STOCK



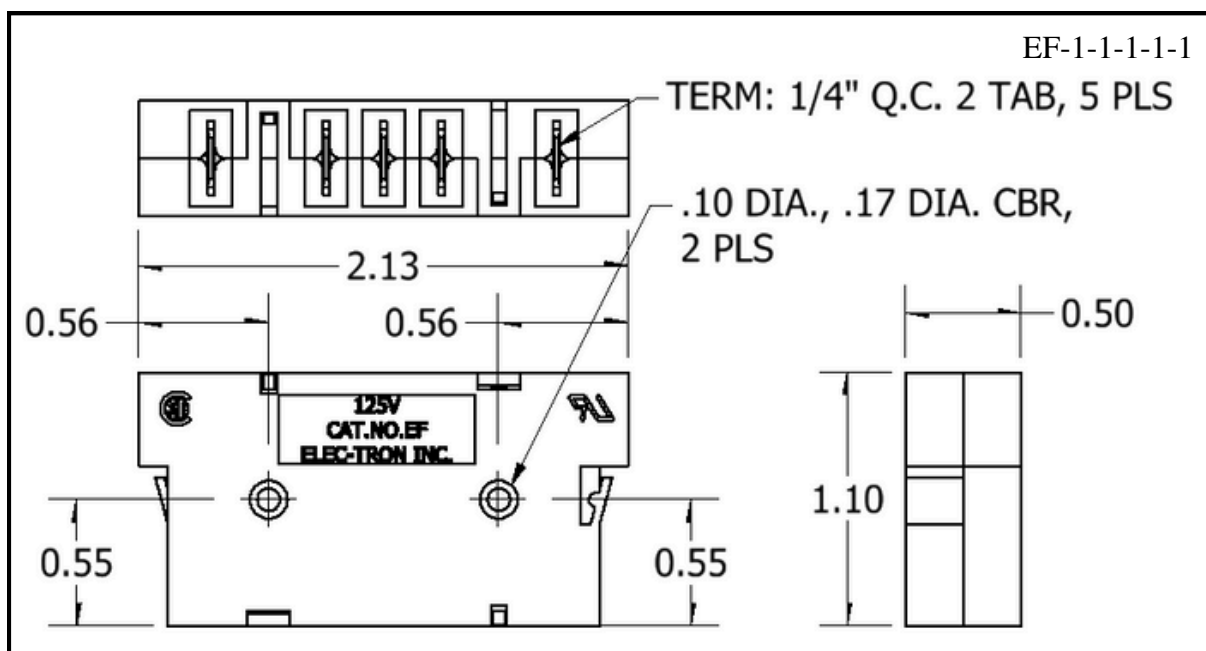
EF-1-1-1-1-1 Specs

Voltage: 250V

Current: 20A

Wire Range: #14-22 AWG

Wire Type: Copper



All dimensions are in inches