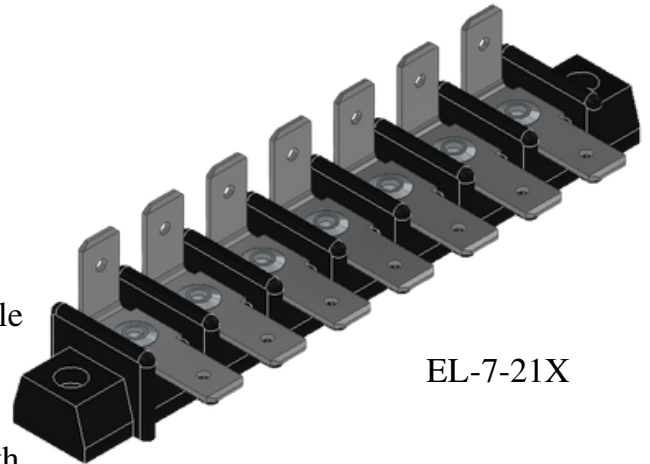
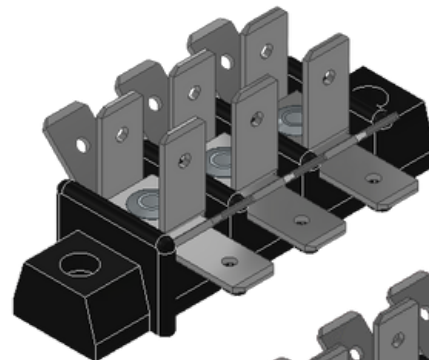


Internal Wiring Junction Block

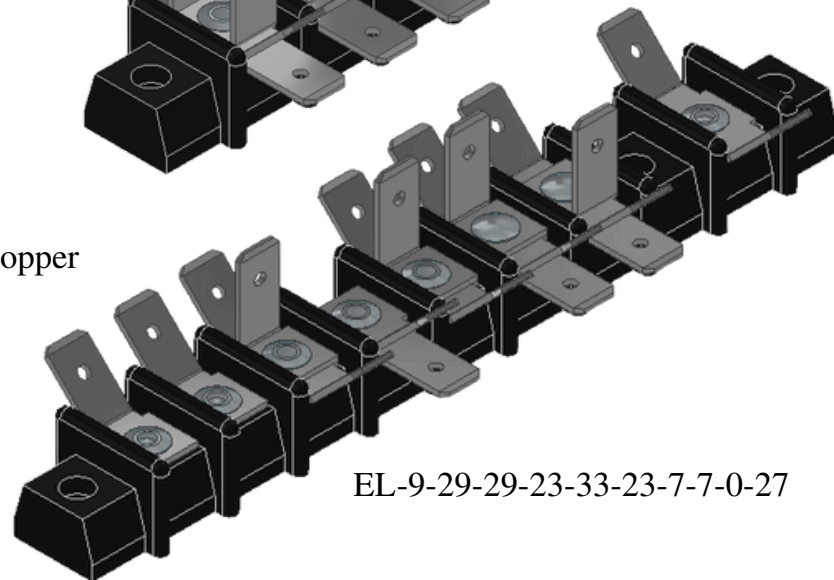
- **35 Terminal Arrangements:** Configurable from 1 to 12 poles
- **Flexible Connectivity:** 1–6 quick-connect tabs per pole
- **Standard Terminals:** .250" × .032" tin-plated male tabs
- **Clear Identification:** Stamped terminal markings available (see C-19)
- **Barrier Design:** 7/16" spacing for improved isolation
- **Rugged Construction:** Molded phenolic block for strength and heat resistance
- UL E61937
 - Temperature Rating: 150°C
 - Wire Range: Factory Wiring
 - Commercial Appliance: 250V & 20A
 - General Industrial: 300V & 10A
- CSA1742185
 - Temperature Rating: 75°C
 - Wire Range/Type: #12-18 AWG Sol. /Str. Copper
 - Commercial Appliance: 250V & 20A
 - General Industrial 300V & 10A



EL-7-21X

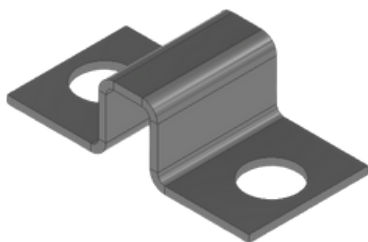


EL-3-2X



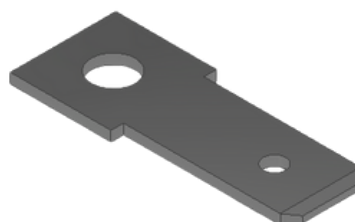
EL-9-29-29-23-33-23-7-7-0-27

Jumper



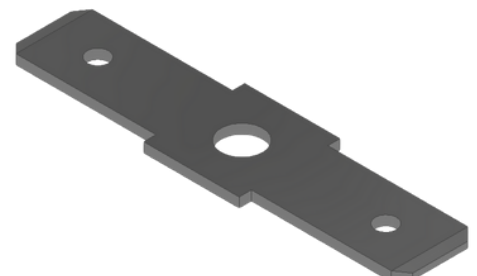
Single Tab

0°, 45°, 90°



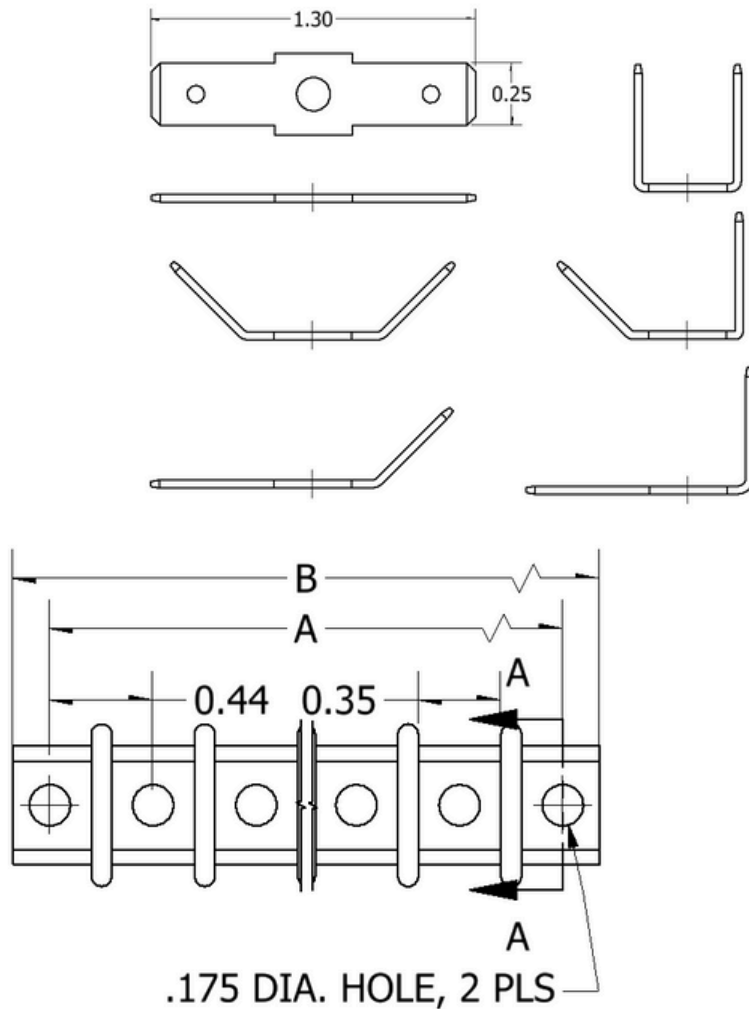
Double Tab

0° & 0°, 0° & 45°, 0° & 90°,
45° & 45°, 45° & 90°, 90° & 90°

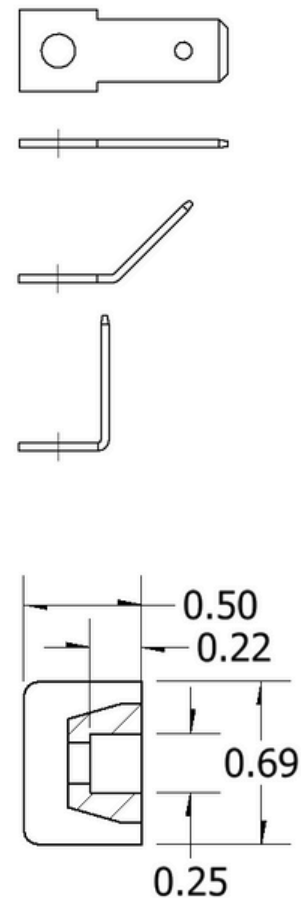


Terminal Styles

Dual Tab



Single Tab

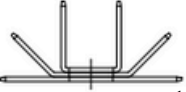
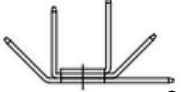
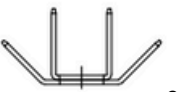
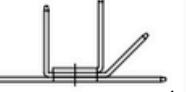
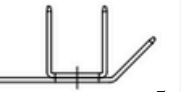
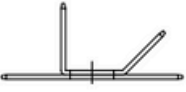

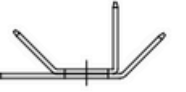

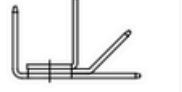

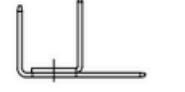

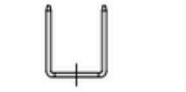



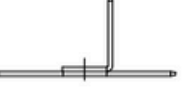





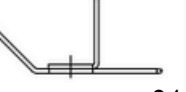
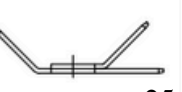
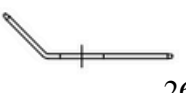

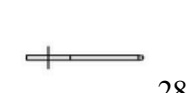




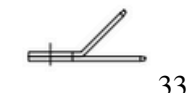



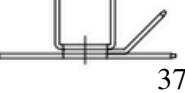
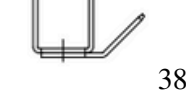


SECTION A-A
SCALE 1 : 1

NO. OF POLES	1	2	3	4	5	6	7	8	9	10	11	12
A DIMENSIONS	.88	1.31	1.75	2.19	2.63	3.06	3.50	3.94	4.38	4.81	5.25	5.69
B DIMENSIONS	1.19	1.63	2.06	2.50	2.94	3.38	3.81	4.25	4.69	5.13	5.56	6.00

All dimensions are in inches

Terminal Combinations

Part Ordering Information EL Block

If ALL pole combinations are identical, write X after the combination is listed

Pole:	1	2	3	4	5	6	7	8	9	10	11	12
EL	—	A B C	A B C	...	—	—	—	—	—	—	—	—

of Poles:

1 = 1 Pole

2 = 2 Poles

...

12 = 12 Poles

Position A & C

Jumper:

Blank = no jumper

J = Jumper

Position B

Terminal Combinations:

0 = empty

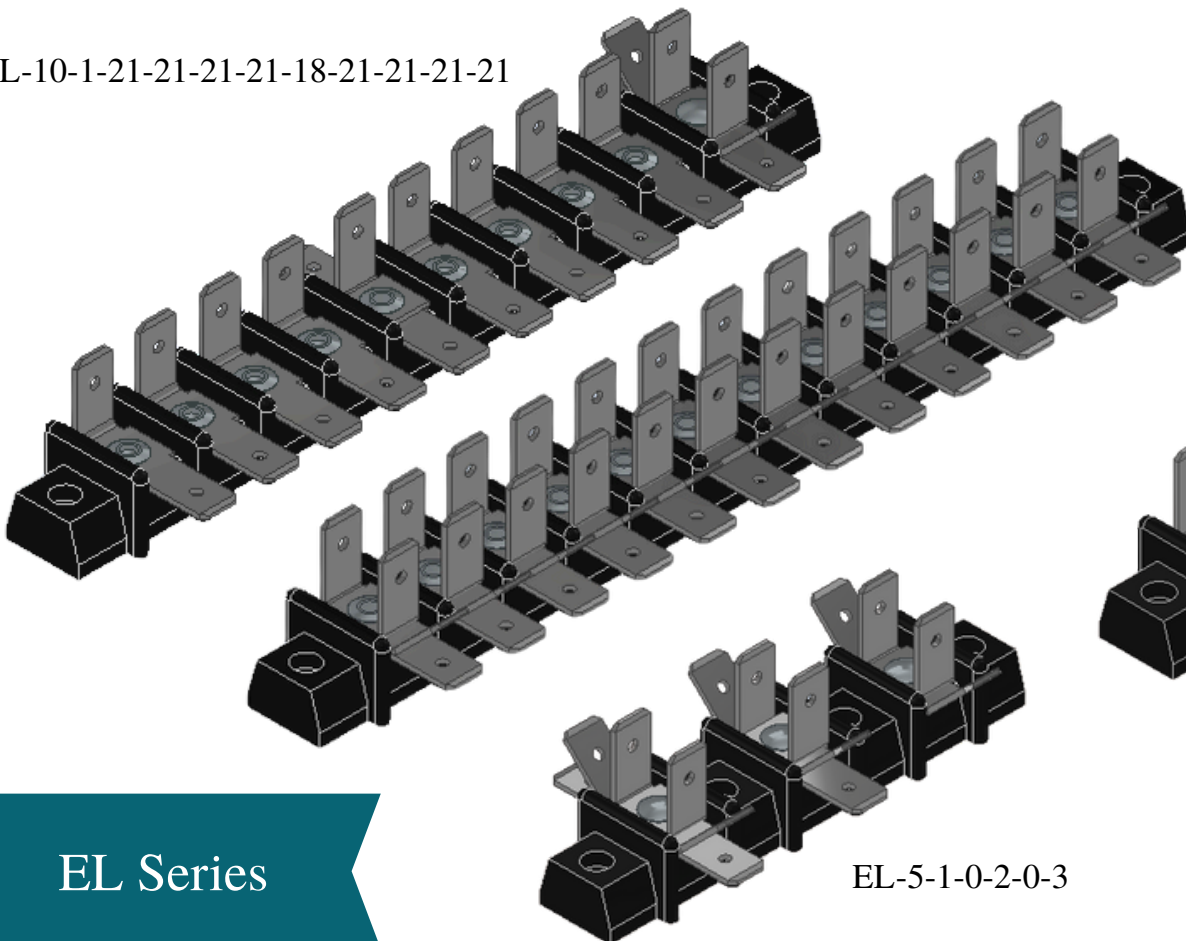
1-38 = see table on C-12

Must include J for each pole where a jumper is present!

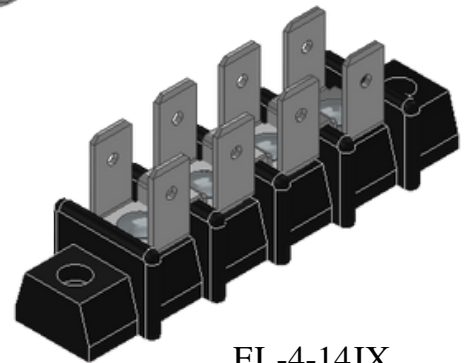
A jumper covers 2 poles (i.e. Jumper on Pole 1C connects to Pole 2A)

Note: Only need the terminal combinations filled for the number of poles on your block

EL-10-1-21-21-21-21-18-21-21-21-21



EL-12-36X



EL-4-14JX

EL-5-1-0-2-0-3

EL Series

Want to customize this more? [Contact us now!](#)

Internal Wiring Junction Block

Ordering #: EL-3-3X

OEM-Focused Design: Engineered for compact, cost-effective single-row barrier-style applications

High-Density Connections: Supports 1 to 12 poles for space-saving, in-line wiring solutions

Extensive Terminal Options: Over 35 terminal configurations per pole, with 1 to 6 quick-connect tabs

Durable Terminals: .032" x .250" tin-plated brass male tabs riveted to the base

Flexible Tab Styles: Dual or single tabs available in straight, 45°, or 90° formed options

Customizable Layouts: Combine up to three terminals per pole for maximum flexibility

Commoning Made Easy: Integral jumpers allow two or more poles to be connected

Rugged Base Material: Molded high-temp phenolic, UL 94V-0 rated for 150°C environments

Adjustable Mounting: Two .175" holes per unit; hole locations adjustable in 7/16" increments

Optional Markings: White ink-stamped terminal IDs available to customer spec

Interchangeable Design: Compatible with other 7/16" barrier blocks for lower cost and faster delivery

IN
STOCK



EL-3-3X Specs

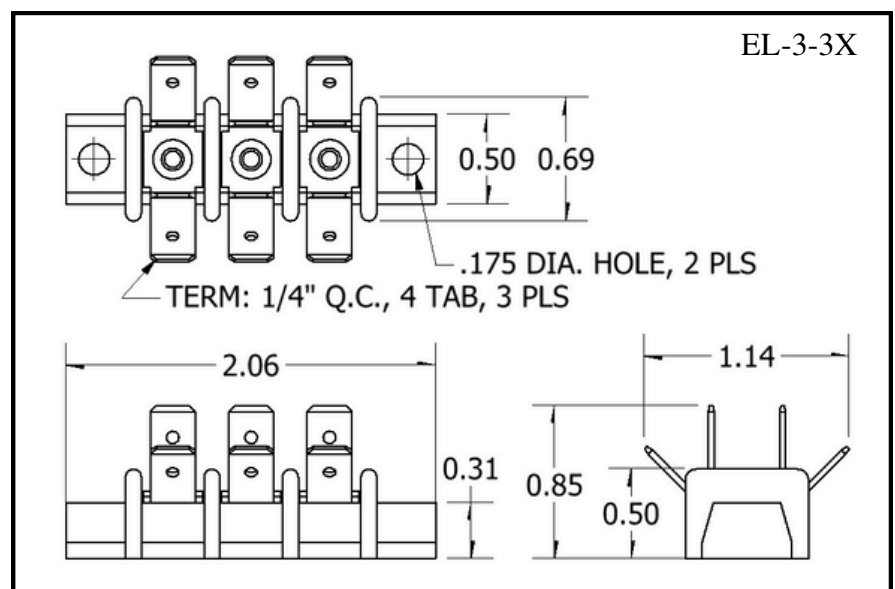
Commercial Appliance: 250V & 20A

General Industrial: 300V & 10A

Temperature Rating: 150°C

Wire Range: #12-18 Sol./Str. AWG

Wire Type: Copper



All dimensions are in inches