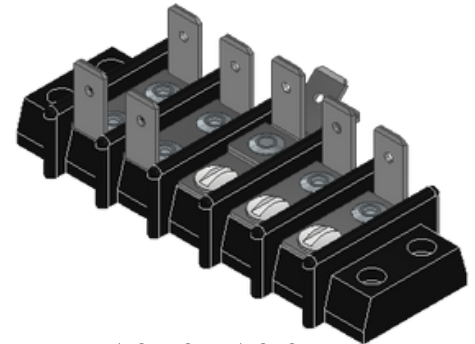
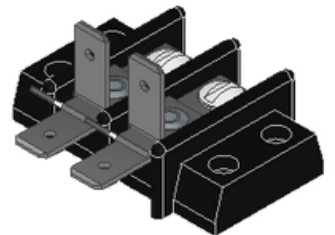


## Internal Wiring Junction Block

- **45 Terminal Arrangements:** Available in 1- to 12-pole configurations
- **High-Density Design:** Supports 1–6 quick-connect tabs per pole
- **Standard Terminals:** .250" × .032" tin-plated male tabs (nickel-plated options also available)
- **Clear Identification:** Stamped terminal markings available (see C-19 for reference)
- **Barrier Spacing:** 7/16" spacing for improved electrical isolation
- **Durable Base Material:** Molded phenolic base for high heat resistance and mechanical strength
- UL E61937
  - Temperature Rating: 150°C
  - Commercial Appliance: 250V & 20A
  - General Industrial: 300V & 10A
  - Wire Range: #14-18 AWG Sol./Str. (Copper Only)
- CSA 1742185
  - Temperature Rating: 75°C
  - Commercial Appliance: 250V & 20A
  - Wire Range: #12-18 AWG Sol./Str. (Copper Only)



ELD-5-27-27-5-3-3

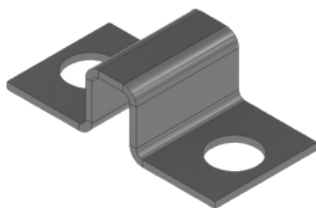


ELD-2-5X



ELD-9-34X

### Jumper



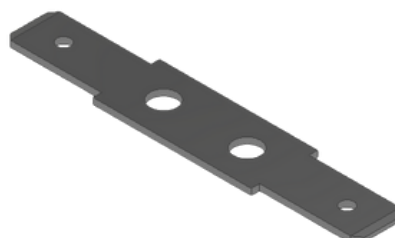
### Single Tab

0°, 45°, 90°



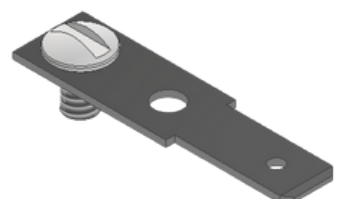
### Double Tab

0° & 0°, 0° & 45°, 0° & 90°,  
45° & 45°, 45° & 90°, 90° & 90°

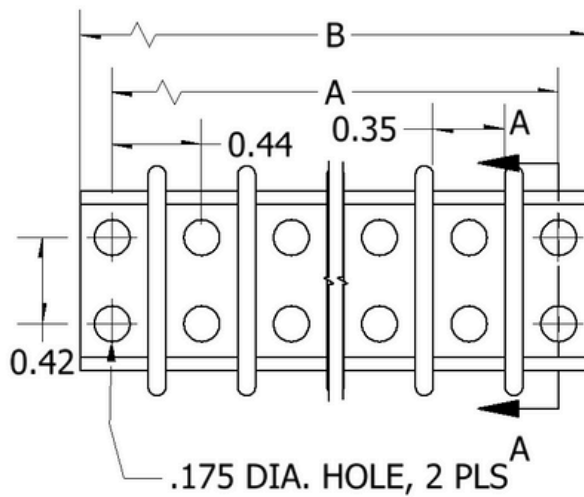
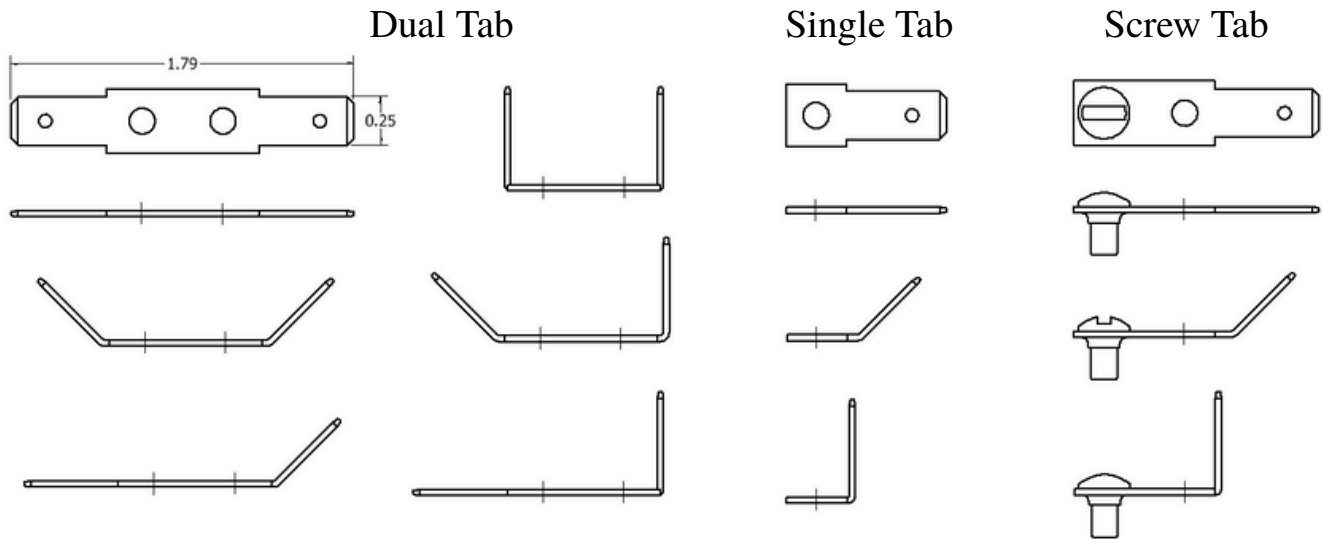


### Screw Tab

0°, 45°, 90°



## Terminal Styles

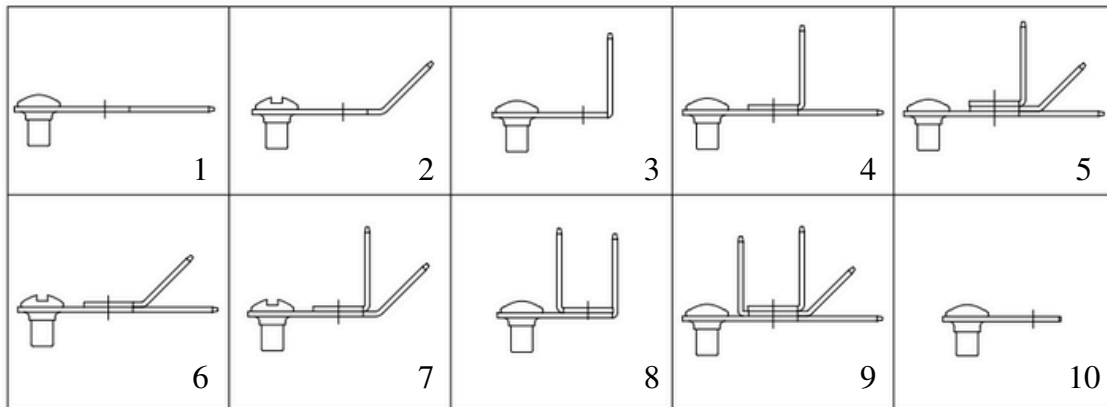


SECTION A-A  
SCALE 1: 1

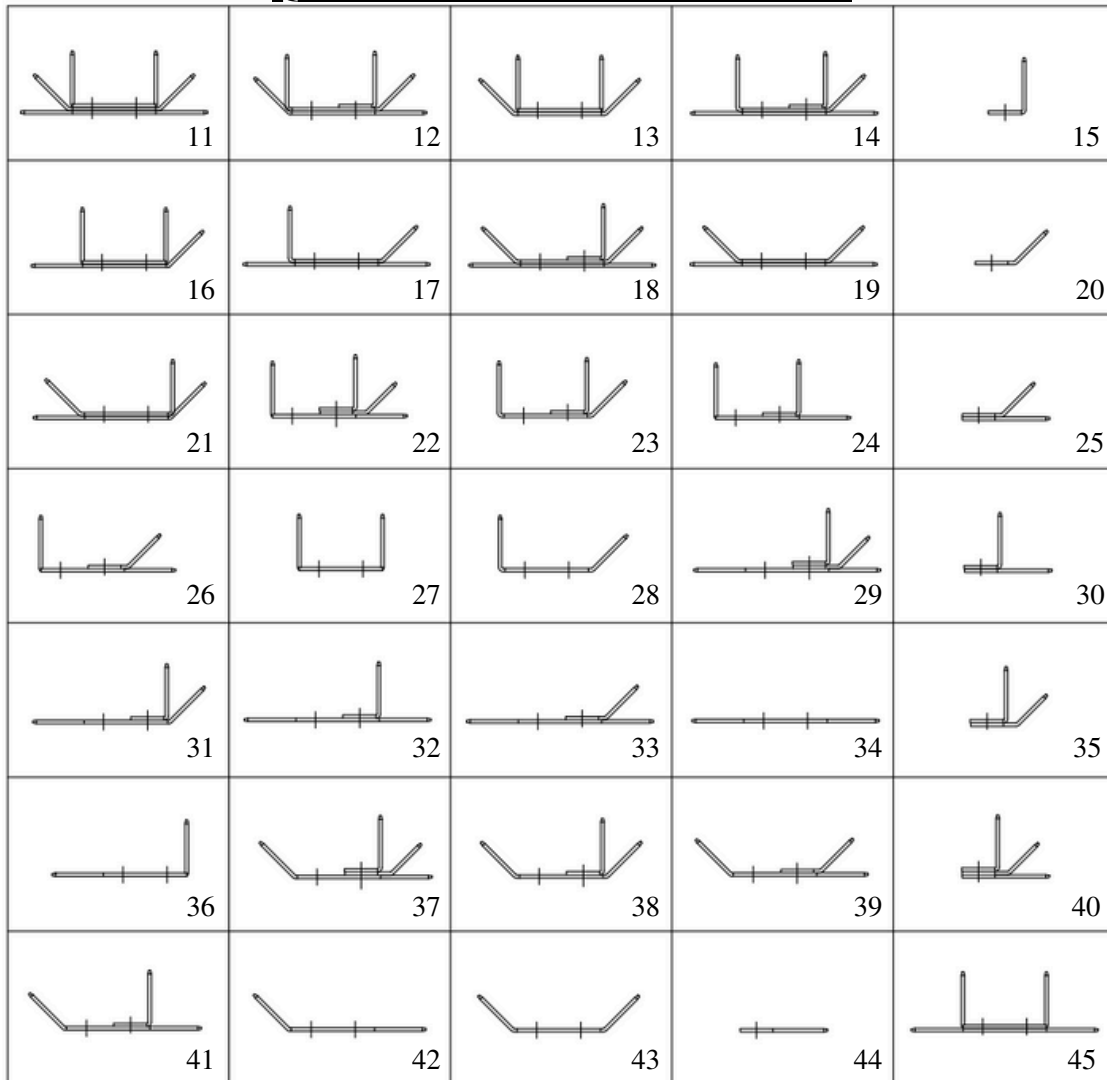
NO. OF POLES	1	2	3	4	5	6	7	8	9	10	11	12
A DIMENSIONS	.88	1.31	1.75	2.19	2.63	3.06	3.50	3.94	4.38	4.81	5.25	5.69
B DIMENSIONS	1.19	1.63	2.06	2.50	2.94	3.38	3.81	4.25	4.69	5.13	5.56	6.00

*All dimensions are in inches*

## Screw Terminal Combinations



## Quick Connect Terminal Combinations



## Part Ordering Information ELD Block

If ALL pole combinations are identical, write X after the combination is listed

Pole:	1	2	3	4	5	6	7	8	9	10	11	12
<b>ELD</b>	—	A B C	A B C	...	---	---	---	---	---	---	---	---

**# of Poles:**

1 = 1 Pole

2 = 2 Poles

...

12 = 12 Poles

Position A & C

**Jumper:**

Blank = no jumper

J = Jumper

Position B

**Terminal Combinations:**

0 = empty

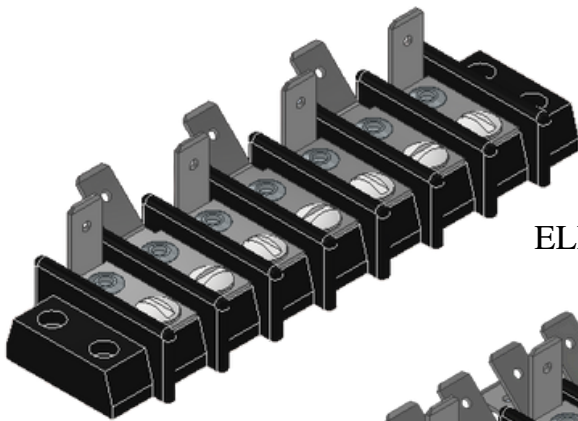
1-10 = screw terminal

11-45 = quick connect terminal

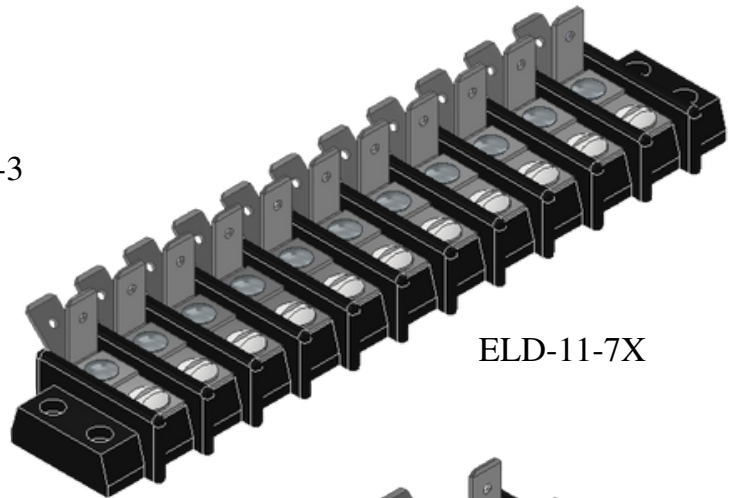
Must include J for each pole where a jumper is present!

A jumper covers 2 poles (i.e. Jumper on Pole 1C connects to Pole 2A)

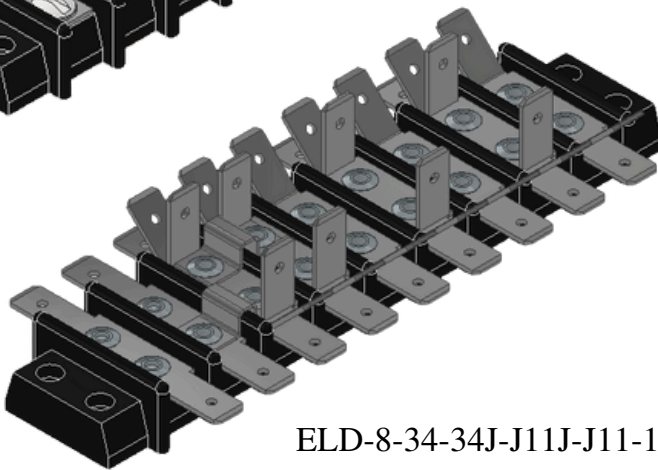
Note: Only need the terminal combinations filled for the number of poles on your block



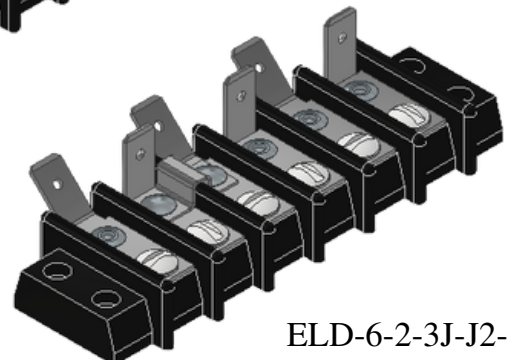
ELD-7-3-2-3-2-3-2-3



ELD-11-7X



ELD-8-34-34J-J11J-J11-19-11-19-11



ELD-6-2-3J-J2-3-2-3

ELD Series

Want to customize this more? [Contact us now!](#)

## Terminal Identification

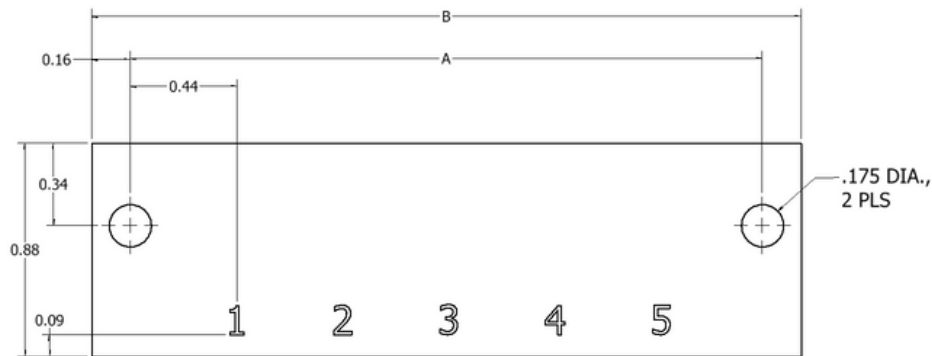
### Marker Strips:

- Used when direct marking on the plastic block is impractical
- Made of 1/32" thick black phenolic laminate
- Mounts under the terminal block and extends beyond its front edge
- Provides a separate surface for numbering and character marking
- Marked with white etching-type ink
- Custom printed to your specifications

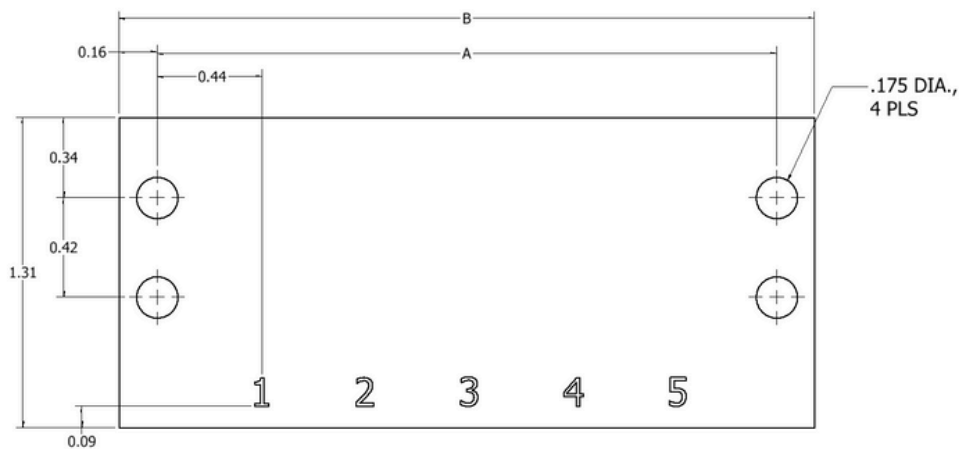
### Block Printing:

- Most economical marking method
- Characters stamped directly onto the molded block face
- Utilizes special rubber printing plates and white etching-type ink
- Custom marking based on supplied character layout diagram

EL Marker Strip



ELD Marker Strip



NO. OF POLES	1	2	3	4	5	6	7	8	9	10	11	12
A DIMENSIONS	.88	1.31	1.75	2.19	2.63	3.06	3.50	3.94	4.38	4.81	5.25	5.69
B DIMENSIONS	1.19	1.63	2.06	2.50	2.94	3.38	3.81	4.25	4.69	5.13	5.56	6.00

All dimensions are in inches

## Internal Wiring Junction Block

Ordering #: ELD-12-22X

**Compact Double-Row Design:** Ideal for combining screw terminals with branch circuit quick-connects

**Field Wiring Ready:** Designed for easy connection between field wiring and factory quick-connect terminals

**Flexible Use:** Can serve as an internal junction block for factory-wired branch circuits

**Highly Configurable:** Over 44 terminal arrangements available per pole

**Quick-Connect Option:** Also offered with quick-connect terminals only

**Screw Terminal Standard:** Uses #6-32 plated steel wire binding screws (plain/plated brass optional)

**Quick-Connect Specs:** .032" x .250" tin-plated brass male tabs

**Tab Styles:** Single or double tabs available in straight, 45°, or 90° configurations

**Terminal Capacity:** Up to three quick-connect terminals can be combined on a single pole

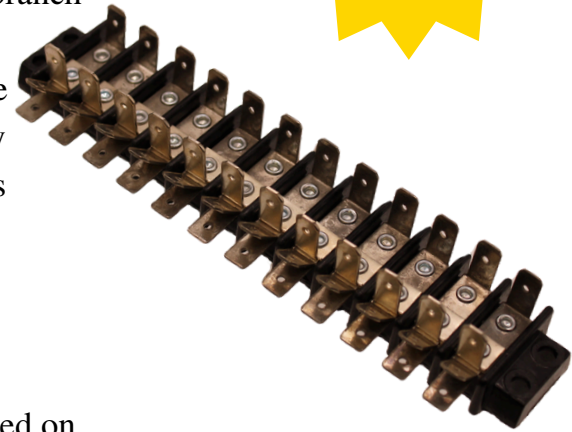
**Durable Base Material:** High-temp phenolic base, UL 94V-0 rated for 150°C

**Mounting Holes:** Four 0.175" holes (two per end) on standard 7/16" center-to-center spacing

**Optional Markings:** Terminal ID printing available to customer specs

**Interchangeable:** Compatible with other 7/16" spaced barrier blocks for easy replacement and sourcing

IN  
STOCK



### ELD-12-22X Specs

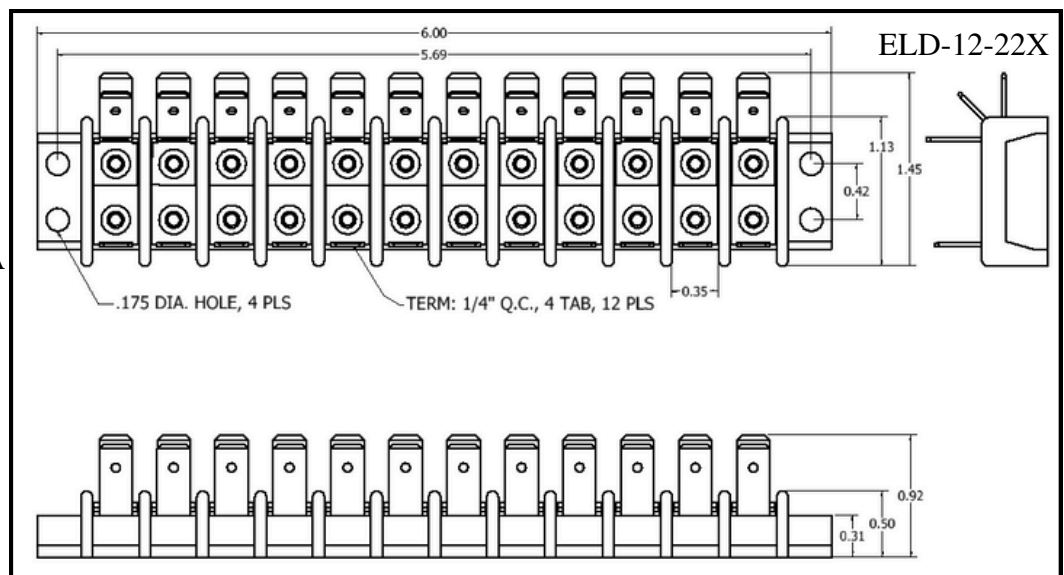
Commercial Appliance: 250V & 20A

General Industrial: 300V & 10A

Temperature Rating: 150°C

Wire Range: #14-18 sol./str. AWG

Wire Type: Copper



*All dimensions are in inches*

ELD Series