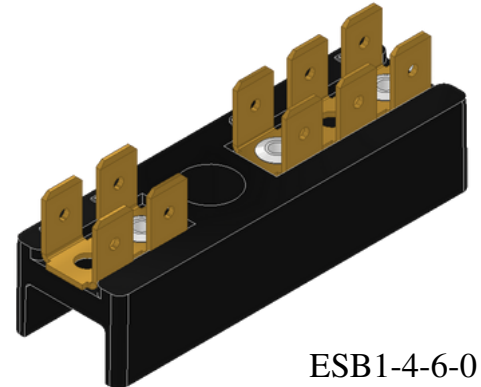


# ESB1 Series

C-1

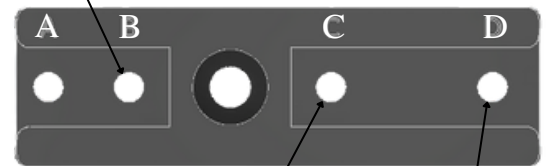
## General Purpose Terminal Block

- **Five Mold Styles:** Durable molded phenolic construction
- **Configurable:** Hundreds of terminal combinations available
- **Standard Tabs:** .250 × .032"; most also in .187 × .020"
- **Safe Spacing:** Exceeds 3/8" for electrical clearance
- **Custom Options:** Terminal Identification and printing available
- UL E61937
  - Temperature Rating: 150°C
  - Voltage: 300V (600V with Insulator Board)
  - Wire Range: 14 Sol./Str.
  - Tightening Torque: 5 in.-lbs.
- CSA 1742185
  - Voltage: 250V
  - Current: 20A



ESB1-4-6-0

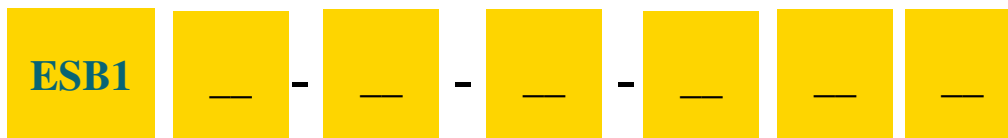
Terminal 1



Terminal 2

Terminal 3

## Part Ordering Information ESB1 Block



### Mounting

C = No Anti-Rotation  
Blank = Anti-Rotation

### Terminal 1(B):

0 = no terminal  
2-6 = 2-6 tabs  
101 - 106 = 1-6 tabs + screw  
101R - 102R = 1-2 tabs + screw & rotated

### Terminal 2(C):

0 = no terminal  
2-8 = 2-8 tabs  
101 - 106 = 1-6 tabs + screw  
101R - 102R = 1-2 tabs + screw & rotated

### Terminal 3(D):

0 = no terminal  
2-6 = 2-6 tabs  
101 - 106 = 1-6 tabs + screw  
101R - 102R = 1-2 tabs + screw & rotated  
*Terminal 3 may ONLY be used if Terminal 2 is 0,2,3\*,101R or 102R*

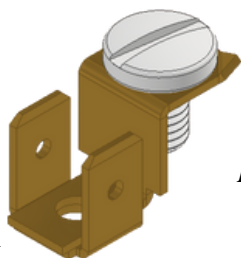
*\*3 tab not available for 600V application*

### Plating

N = Nickel Plated Brass  
T = Tin Plated Brass  
Blank = Unplated Brass

### Insulator

I = Insulator (600V)  
Blank = No Insulator (300V)



### Tabs with Screw

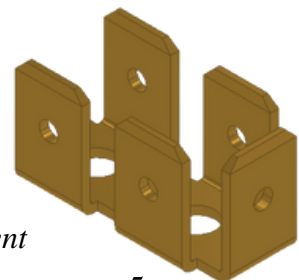
1,2,3,4,5 or 6 tabs

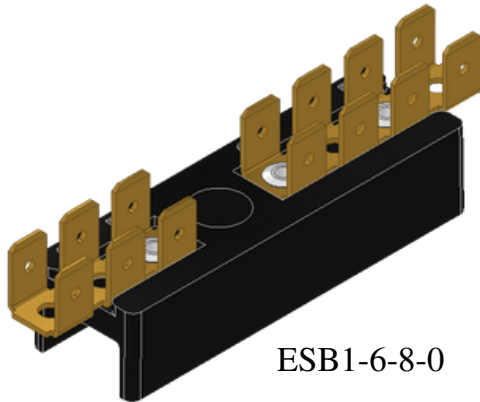
*If the screw is rotated, 1 or 2 tabs only*

### Tab Sizes:

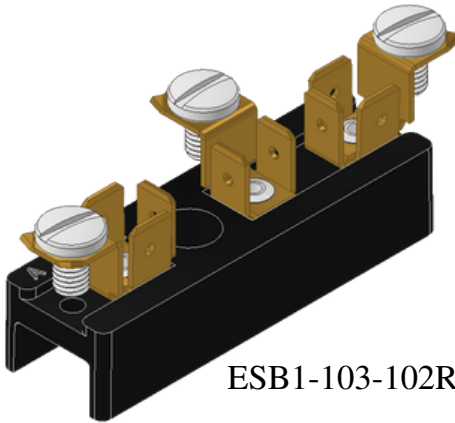
2,3,4,5,6,7,8

*Terminal Dependent*

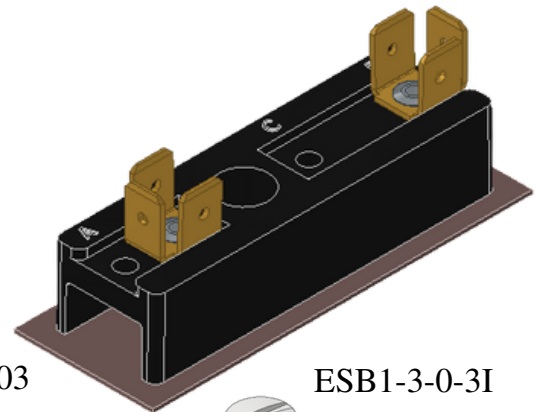




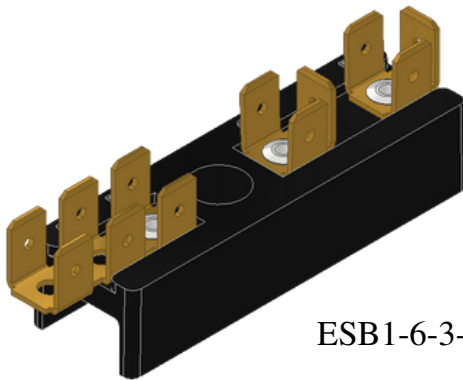
ESB1-6-8-0



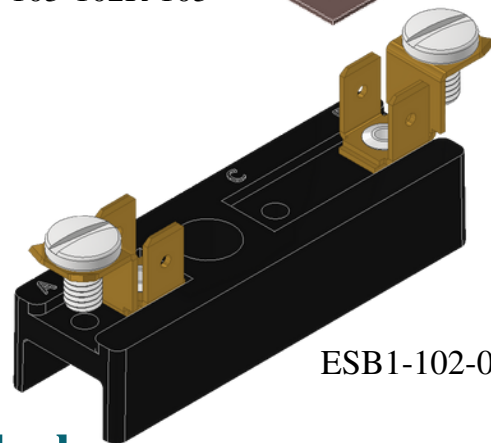
ESB1-103-102R-103



ESB1-3-0-3I

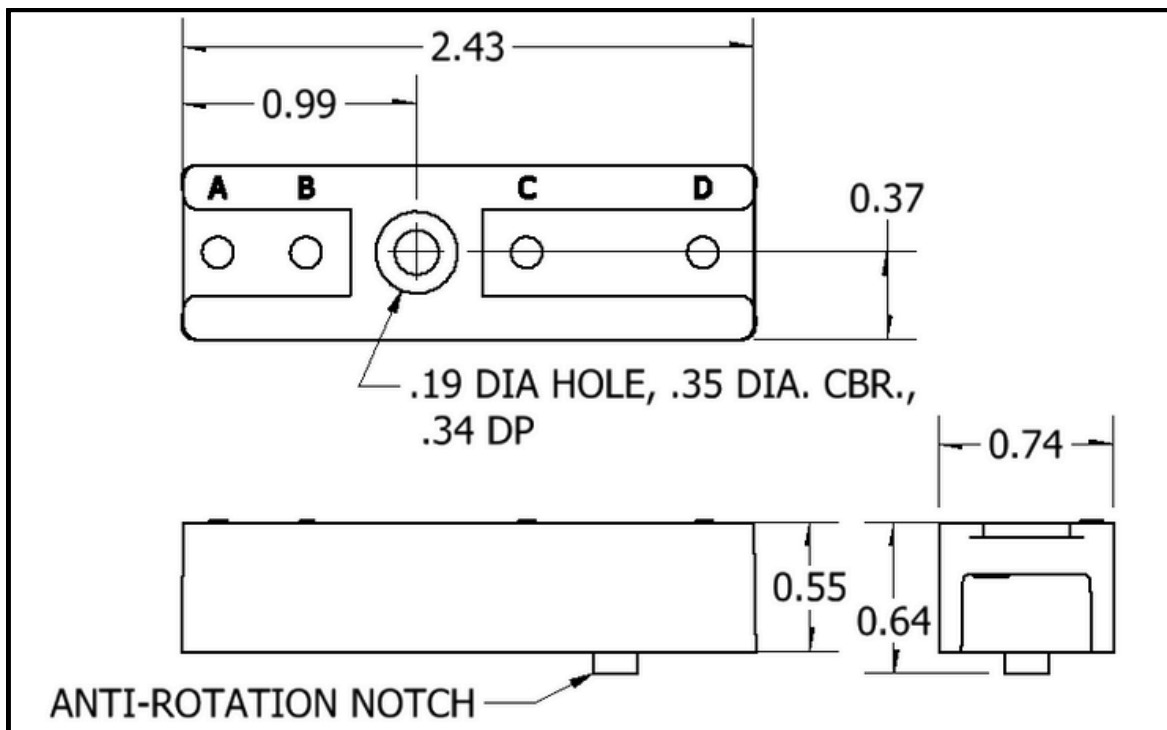


ESB1-6-3-3



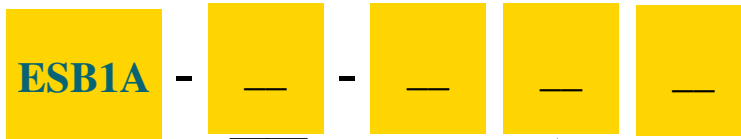
ESB1-102-0-102

## ESB1 Block



*All dimensions are in inches*

## Part Ordering Information ESB1A Block



### Terminal 1(C):

0 = no terminal  
2-8 = 2-8 tabs  
101 - 106 = 1-6 tabs + screw  
101R - 102R = 1-2 tabs + screw & rotated

### Terminal 2(D):

0 = no terminal  
2-6 = 2-6 tabs  
101 - 106 = 1-6 tabs + screw  
101R - 102R = 1-2 tabs + screw & rotated  
*Terminal 2 may ONLY be used if Terminal 1 is 0,2,3\*,101R or 102R*

*\*3 tab not available for 600V application*

### Insulator

I = Insulator (600V)  
Blank = no insulator (300V)

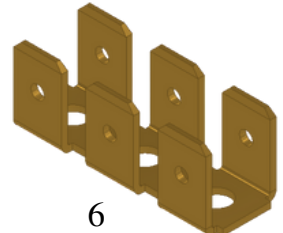
### Plating

T = Tin Plated Brass  
N = Nickel Plated Brass  
Blank = Unplated Brass

### Tab Sizes:

2,3,4,5,6,7,8

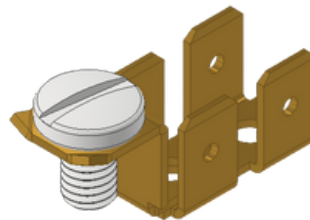
Terminal  
Dependent



### Tabs with Screw

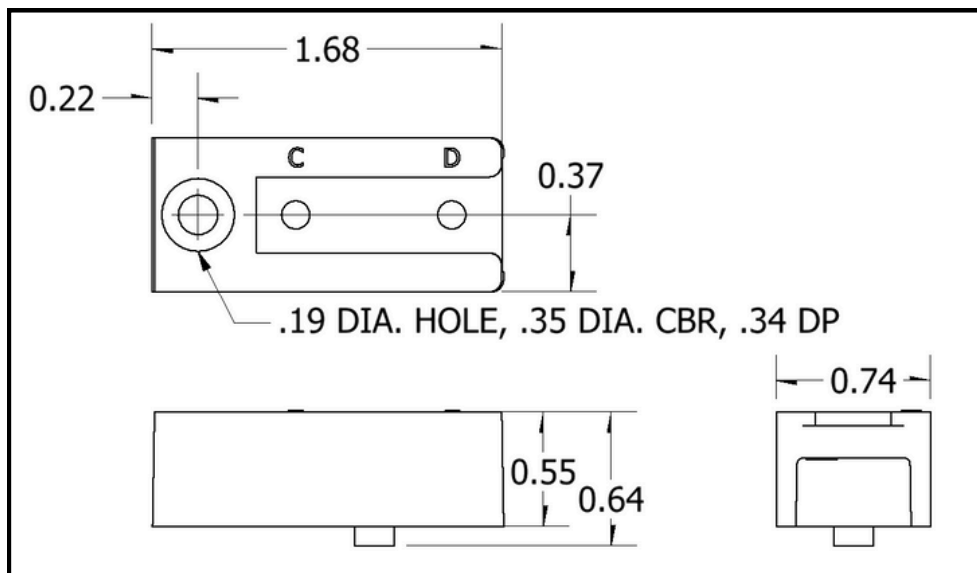
1,2,3,4,5 or 6 tabs

*If the screw is rotated,  
1 or 2 tabs only*

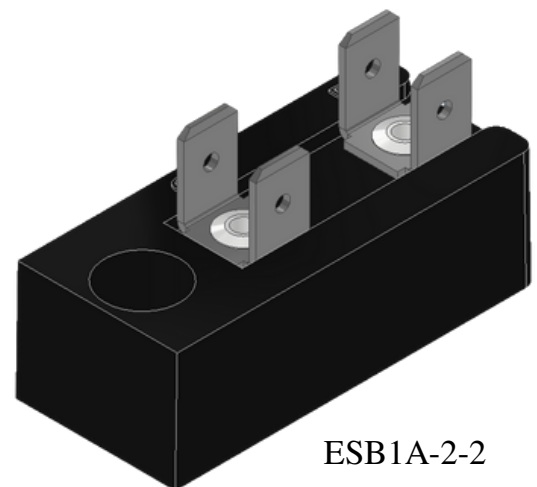


104

## ESB1A Block

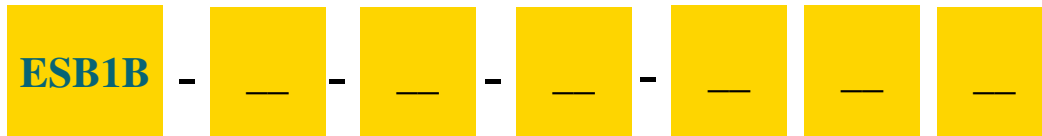


*All dimensions are in inches*



ESB1A-2-2

## Part Ordering Information ESB1B Block



### Terminal 1 & 4(B & E):

0 = no terminal  
 2-6 = 2-6 tabs  
 101 - 106 = 1-6 tabs + screw  
 101R - 102R = 1-2 tabs + screw & rotated  
*Terminal 2 may ONLY be used if Terminal 1 is 0,2,3\*,101R or 102R*

*\*3 tab not available for 600V application*

### Terminal 2 & 3(C & D):

0 = no terminal  
 2-8 = 2-8 tabs  
 101 - 106 = 1-6 tabs + screw  
 101R - 102R = 1-2 tabs + screw & rotated

*All terminal connects will be assembled outward*

### Insulator

I = Insulator (600V)  
 Blank = no insulator (300V)

### Plating

T = Tin Plated Brass  
 N = Nickel Plated Brass  
 Blank = Unplated Brass

### Tab Sizes:

2,3,4,5,6,7,8

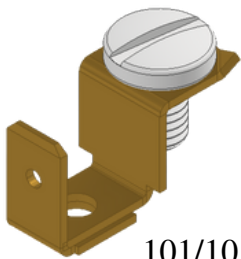
*Terminal Dependent*

### Tabs with Screw

1,2,3,4,5 or 6 tabs

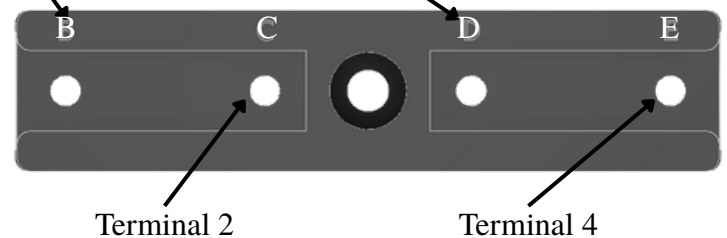
*If the screw is rotated,*

101/101R *1 or 2 tabs only*

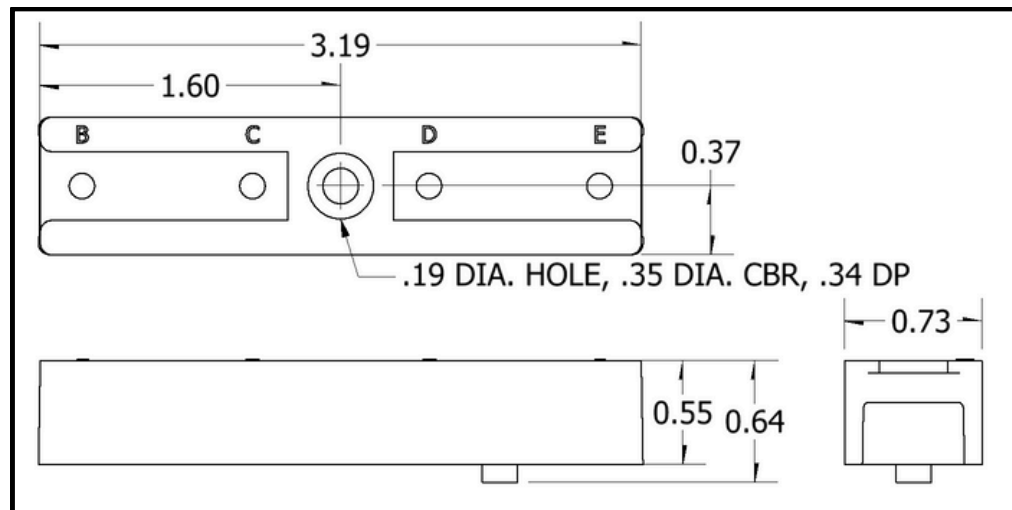


Terminal 1

Terminal 3



## ESB1B Block



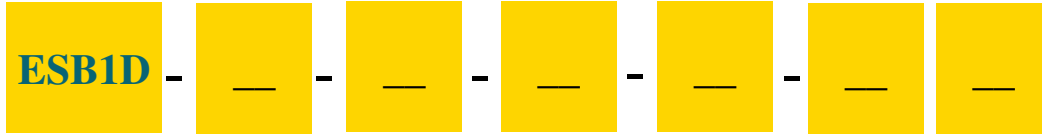
ESB1B-0-6-2-5

ESB1 Series

*All dimensions are in inches*

Want to customize this more? [Contact us now!](#)

## Part Ordering Information ESB1D Block



### Terminal 1(A):

0 = no terminal  
2-4 = 2-4 tabs  
101 - 104 = 1-4 tabs + screw  
101R - 102R = 1-2 tabs + screw & rotated

### Terminal 2 & 3(B & C):

0 = no terminal  
2-4 = 2-4 tabs  
101 - 102 = 1-2 tabs + screw  
101R - 102R = 1-2 tabs + screw & rotated  
*Only Terminal 2 OR 3 may be occupied*

### Terminal 4(D):

0 = no terminal  
2-8 = 2-8 tabs  
101 - 106 = 1-6 tabs + screw  
101R - 102R = 1-2 tabs + screw & rotated

### Terminal 5(E):

0 = no terminal  
2-6 = 2-6 tabs  
101 - 106 = 1-6 tabs + screw  
101R - 102R = 1-2 tabs + screw & rotated  
*Terminal 5 may ONLY be used if Terminal 4 is 0,2,3,101R or 102R*

### Plating

T = Tin Plated Brass  
N = Nickel Plated Brass  
Blank = Unplated Brass

### Tabs with Screw

1,2,3,4,5 or 6 tabs

*If screw is rotated, 1 or*

*2 tabs only*

### Tab Sizes:

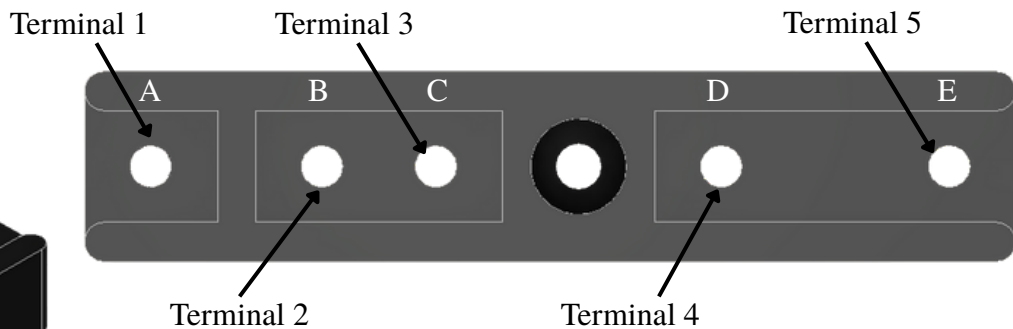
2,3,4,5,6,7,8

*Terminal Dependent*

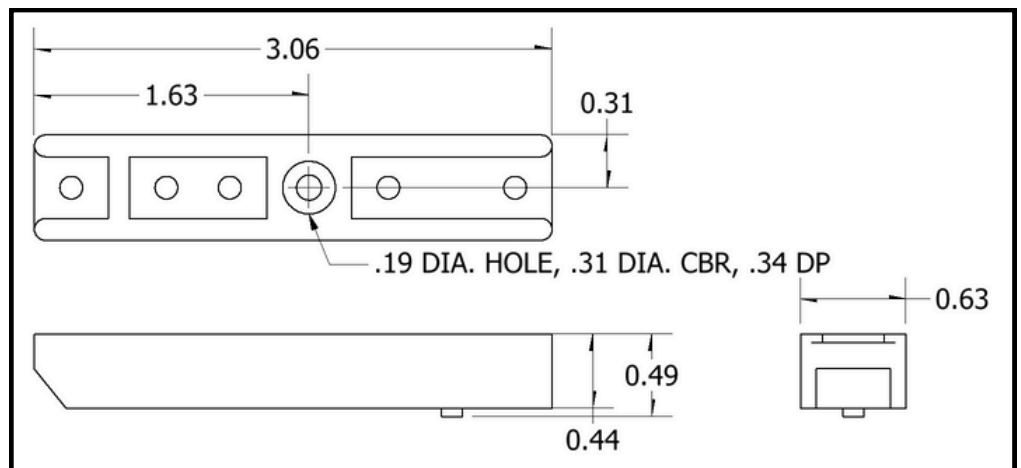
7

105

ESB1D-3-4-0-5-0



## ESB1D Block



ESB1 Series

*All dimensions are in inches*

Want to customize this more? [Contact us now!](#)

## General Purpose Terminal Block

Ordering #: ESB1C-6-6-0

**Compact and Cost-Effective:** Ideal for dependable internal wiring connections

**Highly Configurable:** Choose from several hundred combinations of quick-connect and screw terminals

**Easy Installation:** Single fastener mounting with anti-rotation pin for secure placement

**Universal Fit:** Standard spacing and mounting accommodate a wide range of applications

**Quick Availability:** Stocked components allow near off-the-shelf delivery

**No Tooling Charges:** Save significantly over custom terminal boards

**UL Component Recognized:** All terminal layouts meet U.L. standards

**Flexible Tab Sizes:** Standard .250 x .032 tabs; most styles also offered in .187 x .020

**Optional Features:** Terminal identification and color code printing available

**Durable Construction:** UL-listed phenolic base rated for 150°C high-temp environments

**Enhanced Safety:** Electrical spacing exceeds 3/8"; elevated base offers improved moisture protection



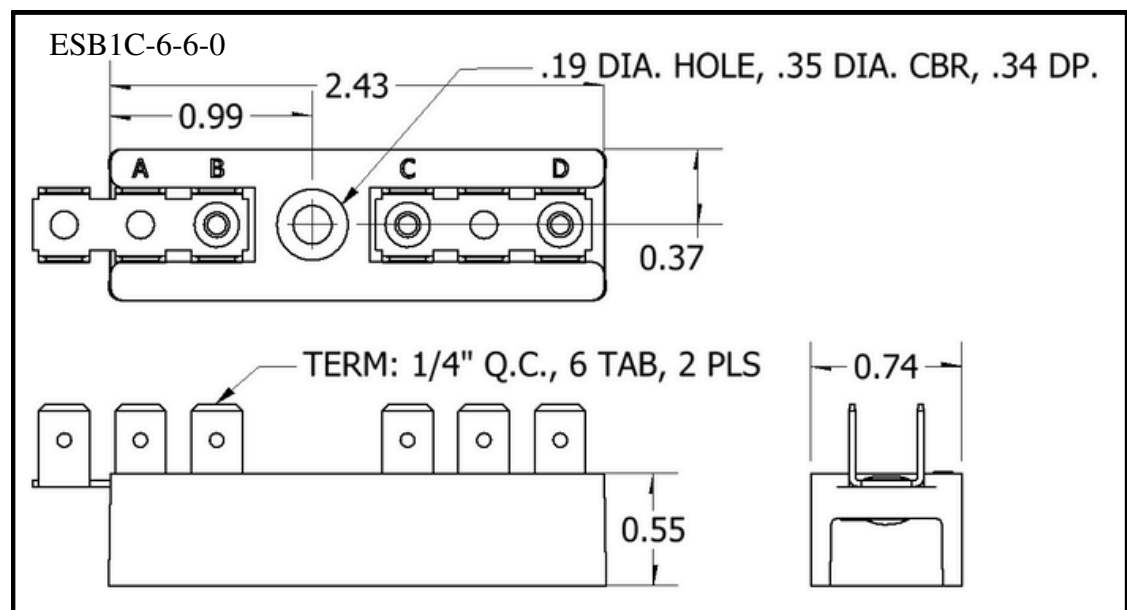
### ESB1C-6-6-0 Specs

Voltage: 300V

Current: 20A

Temperature Rating: 150°C

Tightening Torque: 5in.-lbs.



*All dimensions are in inches*