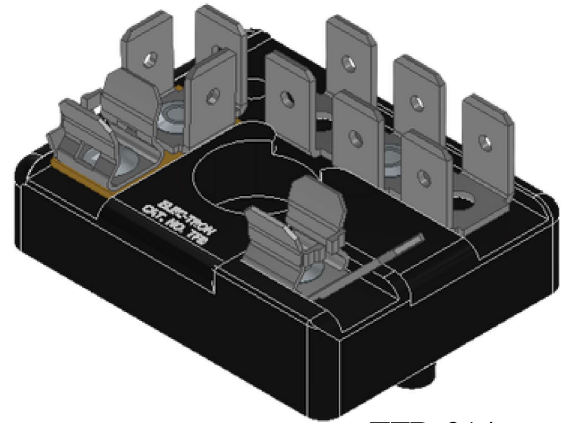
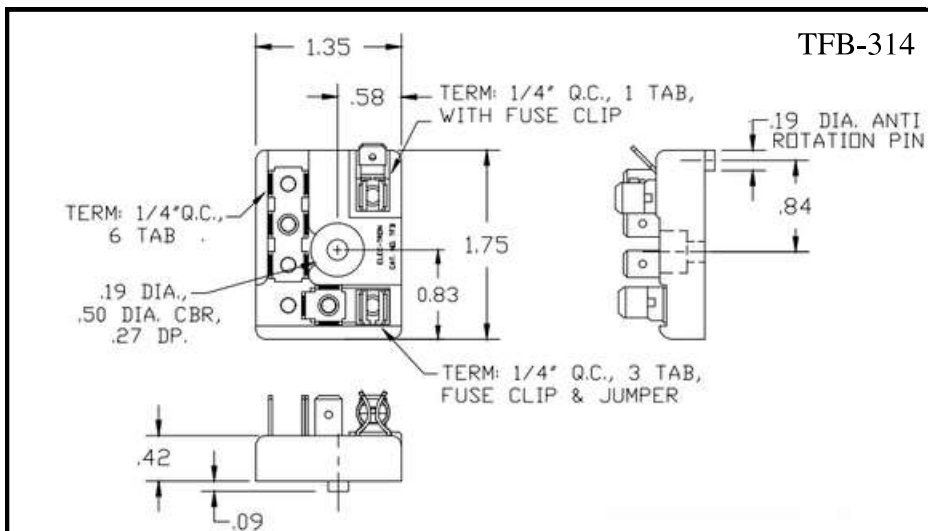


Terminal Fuse Blocks

- **Integrated Design:** Combines quick-connect terminals and fuse holders in a single, space-saving block
- **Easy Installation:** Single fastener mounting allows for quick and secure placement
- **Terminal Options:** Available with .250" × .031" or .188" × .020" male tabs
- **Durable Base:** Molded phenolic base provides excellent heat resistance and mechanical stability
- **Fuse Compatibility:** Designed for 1/4" × 1-1/4" tube fuses



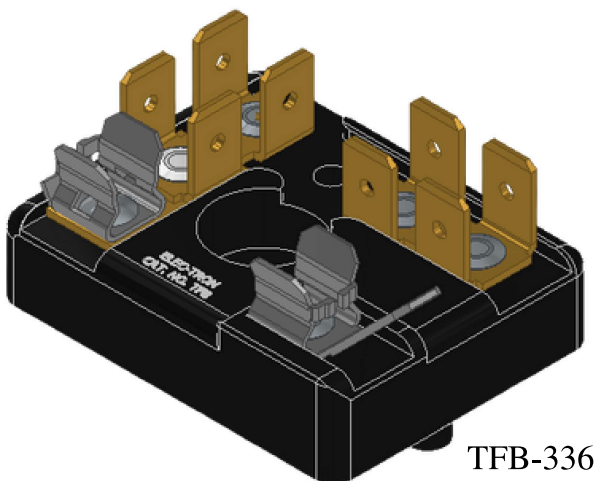
TFB-314



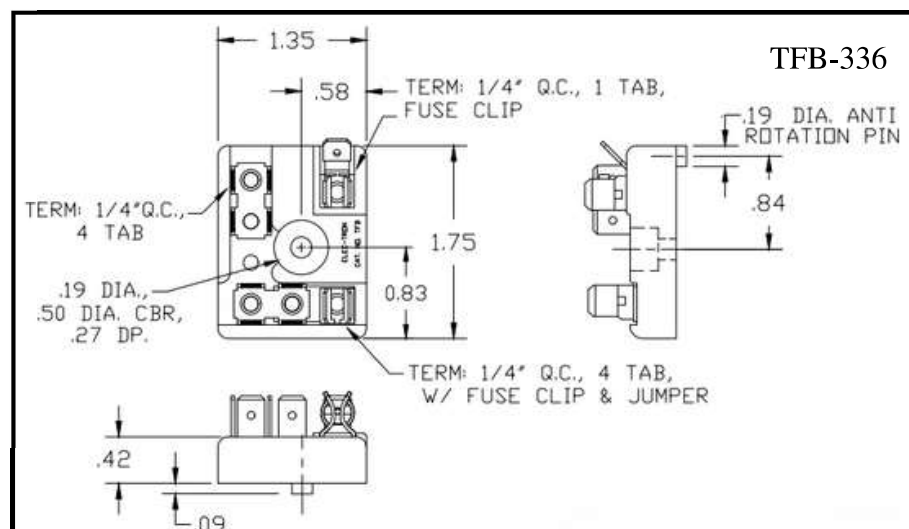
TFB-314

Other configurations are available upon request.
[Contact us to build your dream block today!](#)

All dimensions are in inches

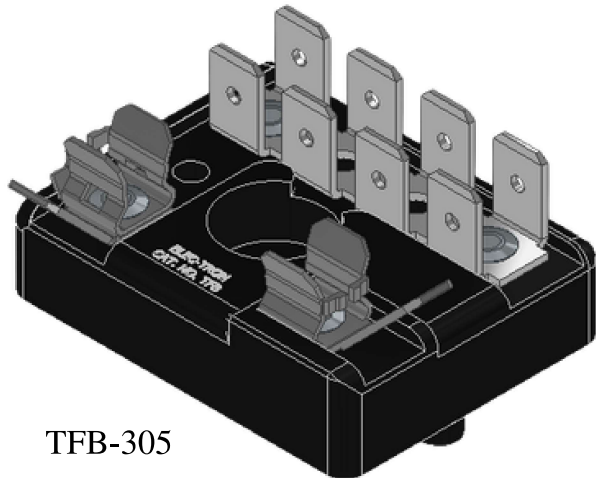


TFB-336

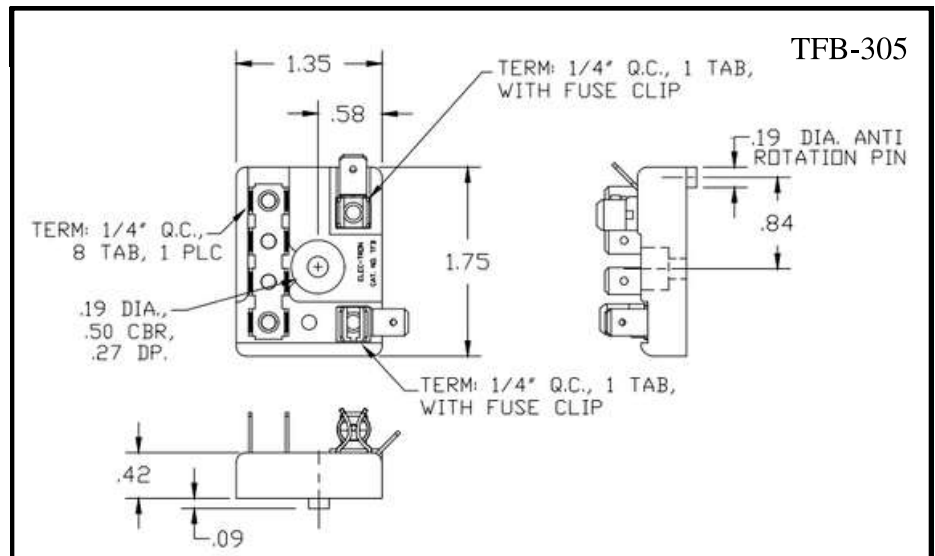


TFB-336

All dimensions are in inches

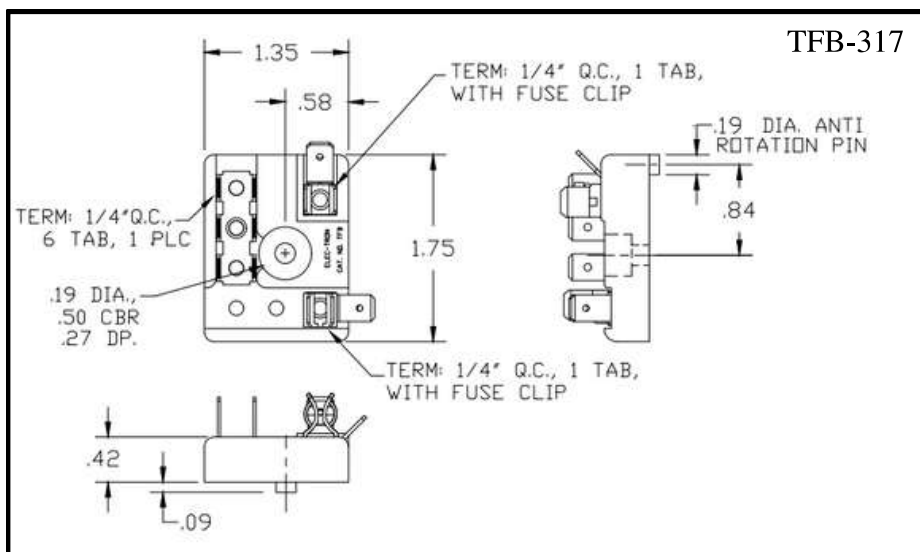


TFB-305



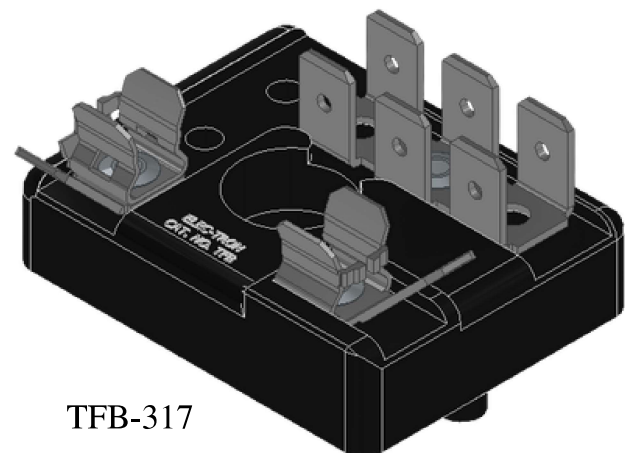
TFB-305

All dimensions are in inches



TFB-317

All dimensions are in inches



TFB-317

Other configurations are available upon request.

[Contact us to build your dream block today!](#)

Terminal Fuse Block

Ordering #: TFB-323

Combination Design: Integrates quick-connect terminals with standard 1/4" fuse holders on a single molded block

Cost & Space Saving: Optional internal fuse junctions with multiple quick-connect tabs reduce wiring and component footprint

Fuse Compatibility: Designed for 1/4" × 1-1/4" tube fuses using plated spring bronze fuse clips

Mounting Simplicity: Single fastener mounting with anti-rotation via 0.19" plastic pin

Flexible Configuration: Available as a fuse/terminal combo block or straight terminal block with various quick-connect options

Application Versatility: Ideal for microwave ovens, small appliances, and general internal junction use

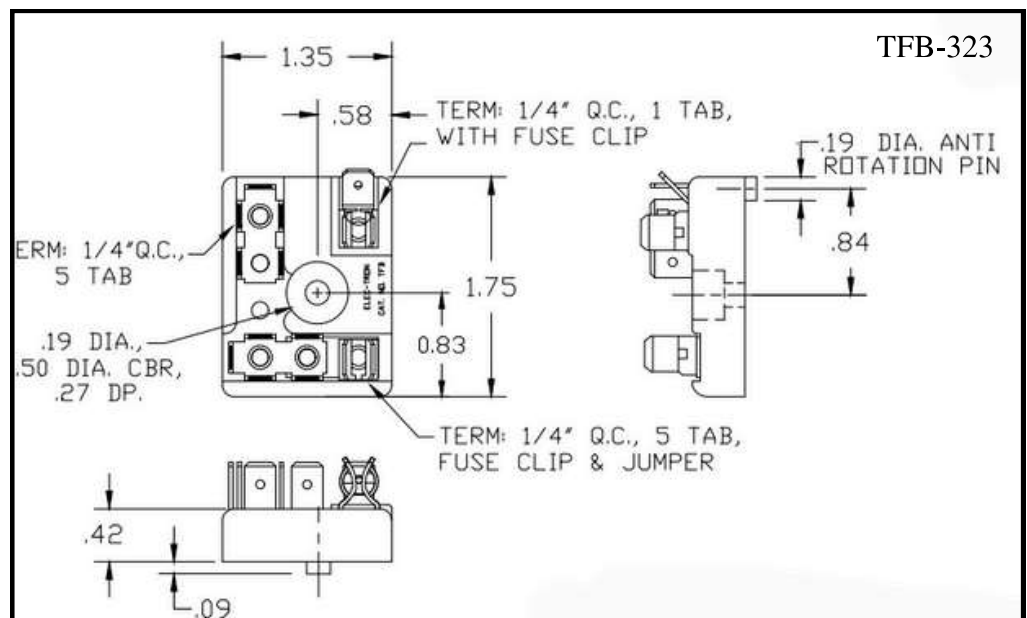
Terminal Options: Choice of .250" × .031" or .188" × .020" male tabs in plain or tin-plated brass

Reliable Construction: One-piece or riveted fuse clip assemblies—no fasteners through the phenolic block

Durable Base: Molded phenolic housing for heat resistance and structural integrity

Optional Features: Special terminal identification markings available

IN
STOCK



TFB Series

All dimensions are in inches

(316) 542-2993

<https://electron.northparkgroup.com>